

Youth Recycling Group Program

Bring your extra recycling to the Dundas public drop-off site, located in the Firehouse Liquor parking lot. For sponsorship information, contact Dundas City Hall at 507-645-2852. All proceeds are donated to the Youth Recycling Group Program.

Address: 607 Stafford Rd N, Dundas, MN 55019

Christmas Tree Collection

Dick's Sanitation provides Christmas Tree collection service free of charge during the first 2 full weeks of January. Please call our office at 952-469-2239 or visit www.dickssanitation.com to schedule a pick up.

Bulk items

Please call Dick's Sanitation at 952-469-2239 or visit www.dickssanitation.com to schedule a pick up for bulk items such as construction debris, furniture, electronics, appliances, etc.

Hazardous Waste

Dispose of hazardous materials, paint products, electronics, etc., at the Rice County House Hold Hazardous Waste.

For more information on disposal, accepted items and hours, please visit www.co.rice.mn.us/229/Household-Hazardous-Waste

Address: 3800 E 145th St. Dundas, MN 55019

Single-Sort Recycling

Keep our planet clean by Recycling Well! Visit <https://www.recyclemn.org/what-we-sort/> to see what items are accepted in your single-sort container.



Available Services

Yard waste	Electronics
Roll off	Appliances
Temporary dumpsters	Commercial Services

Cart Sizes

35 gallon 65 gallon 95 gallon



Our Website

Check out our website, www.dickssanitation.com, for up-to-date information, account access, and more.



Welcome to DSI...

Dick's Sanitation Inc. (DSI) is the approved waste and recycling hauler for the City of Dundas. We are a local, family-owned and operated company, doing business since 1966. We strive to provide the best overall value, while maintaining our quality service.

Our team is committed to community involvement, safety and customer service.

We look forward to serving you for many years!

City of Dundas

Pink Cart Program™



Help DSI kick cancer to the curb with our Pink Cart™ Program. For every Pink Cart™ purchase, DSI donates \$5 to the local American Cancer Society Chapter in Mendota Heights, MN. Funds donated go toward breast cancer awareness programs.

Angel Foundation

DSI matches customer donations (up to \$12/year) to the Angel Foundation; a Twin Cities based nonprofit, which provides financial assistance and support to local families living with cancer.

For more information about the Angel Foundation, please visit www.mnangel.org.

To donate, please call our office at 952-469-2239 or fill out the form below.



*Please check the box(es) for the program(s) you want to sign up for.

Pink Cart™

I understand I will be billed a one time fee of \$29 plus tax for a Pink Cart™.

Angel Foundation

I would like to donate \$_____ to the Angel Foundation. I understand this will be an annual contribution, matched by DSI (up to \$12/year).

Account #: _____

Address: _____

Phone #: _____

Credit Card #: _____

Expiration Date: _____

Print Name: _____

Signature: _____

*Pre-payment required. Please fill out the credit card information above.

Service Day

Your service day will be: _____

2020 Recycle Calendar

January							February							March						
S	M	T	W	T	F	S	S	M	T	W	T	F	S	S	M	T	W	T	F	S
	1	2	3	4				1						1	2	3	4	5	6	7
5	6	7	8	9	10	11	2	3	4	5	6	7	8	8	9	10	11	12	13	14
12	13	14	15	16	17	18	9	10	11	12	13	14	15	15	16	17	18	19	20	21
19	20	21	22	23	24	25	16	17	18	19	20	21	22	22	23	24	25	26	27	28
26	27	28	29	30	31		23	24	25	26	27	28	29	29	30	31				

April							May							June						
S	M	T	W	T	F	S	S	M	T	W	T	F	S	S	M	T	W	T	F	S
	1	2	3	4				1	2					1	2	3	4	5	6	
5	6	7	8	9	10	11	3	4	5	6	7	8	9	7	8	9	10	11	12	13
12	13	14	15	16	17	18	10	11	12	13	14	15	16	14	15	16	17	18	19	20
19	20	21	22	23	24	25	17	18	19	20	21	22	23	21	22	23	24	25	26	27
26	27	28	29	30			24	25	26	27	28	29	30	28	29	30				
							31													

July							August							September						
S	M	T	W	T	F	S	S	M	T	W	T	F	S	S	M	T	W	T	F	S
	1	2	3	4				1						1	2	3	4	5		
5	6	7	8	9	10	11	2	3	4	5	6	7	8	6	7	8	9	10	11	12
12	13	14	15	16	17	18	9	10	11	12	13	14	15	13	14	15	16	17	18	19
19	20	21	22	23	24	25	16	17	18	19	20	21	22	20	21	22	23	24	25	26
26	27	28	29	30	31		23	24	25	26	27	28	29	27	28	29	30			
							30	31												

October							November							December						
S	M	T	W	T	F	S	S	M	T	W	T	F	S	S	M	T	W	T	F	S
	1	2	3				1	2	3	4	5	6	7	1	2	3	4	5		
4	5	6	7	8	9	10	8	9	10	11	12	13	14	6	7	8	9	10	11	12
11	12	13	14	15	16	17	15	16	17	18	19	20	21	13	14	15	16	17	18	19
18	19	20	21	22	23	24	22	23	24	25	26	27	28	20	21	22	23	24	25	26
25	26	27	28	29	30	31	29	30						27	28	29	30	31		

Holiday Schedule

DSI will be closed on the following holidays:

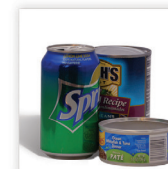
- Jan. 1st, New Year's Day
- May 27th, Memorial Day
- Sept. 2nd, Labor Day
- Nov. 28th, Thanksgiving
- Dec. 25th, Christmas

Service will be delayed one day starting on the holiday of that week.

RECYCLE WELL

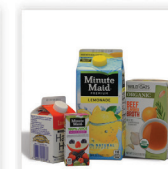
THANK YOU FOR RECYCLING THESE:

Cans



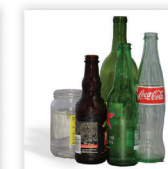
Aluminum and Steel Cans
empty and rinse

Cartons



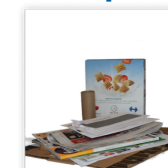
Food and Beverage Cartons
empty and replace cap

Glass



Bottles and Jars
empty and rinse without lids

Paper



Mixed Paper, Newspaper, Magazines, and Flattened Cardboard

Plastic Containers



Kitchen, Laundry, Bath: Bottles and Containers
empty and replace cap

NO!

Do Not Bag Recyclables No Garbage

No Plastic Bags or Plastic Wrap (return to retail)

No Food or Liquid (empty all containers)

No Tangles (no hoses, wires, chains, or electronics)

No Sharps

No Batteries